

CAMDEN

JG170U

MUKUA



201 Dark Grey

200 Black

513 Petroleum Blue

512 Deep Navy

621 Misty Green

111 Tan

Unisex lined light jacket

165 g/m²

Dobby 4 way stretch

92% Polyester. 8% spandex

Lining: Fleece 100% Polyester

XS — 3XL

4 way stretch

Water repellent exterior fabric

Polar fleece lining

Full front inverted tone-on-tone zipper with chin protector and cord puller

2 exterior side pockets with invisible zippers and one interior pocket with velcro closure

Extra large invisible back pocket, ideal for self-stuffing or carrying objects

3 elastic bias cuffs panel hood with adjustable elastic cord with stopper in interior of collar

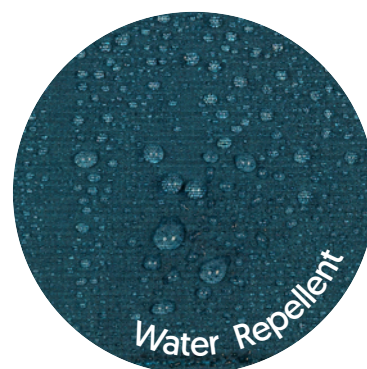
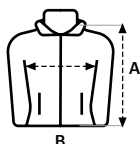
Hanging loop on inside collar

Rounded back longer than front

SIZES

	XS	S	M	L	XL	2XL	3XL
A	71	72	73	74	75	76	77
B	46	50	54	58	62	66	70

Measurements in cm. Tolerance +/- 5%



Removable label

20 pieces per box

1 piece paper-wrapped